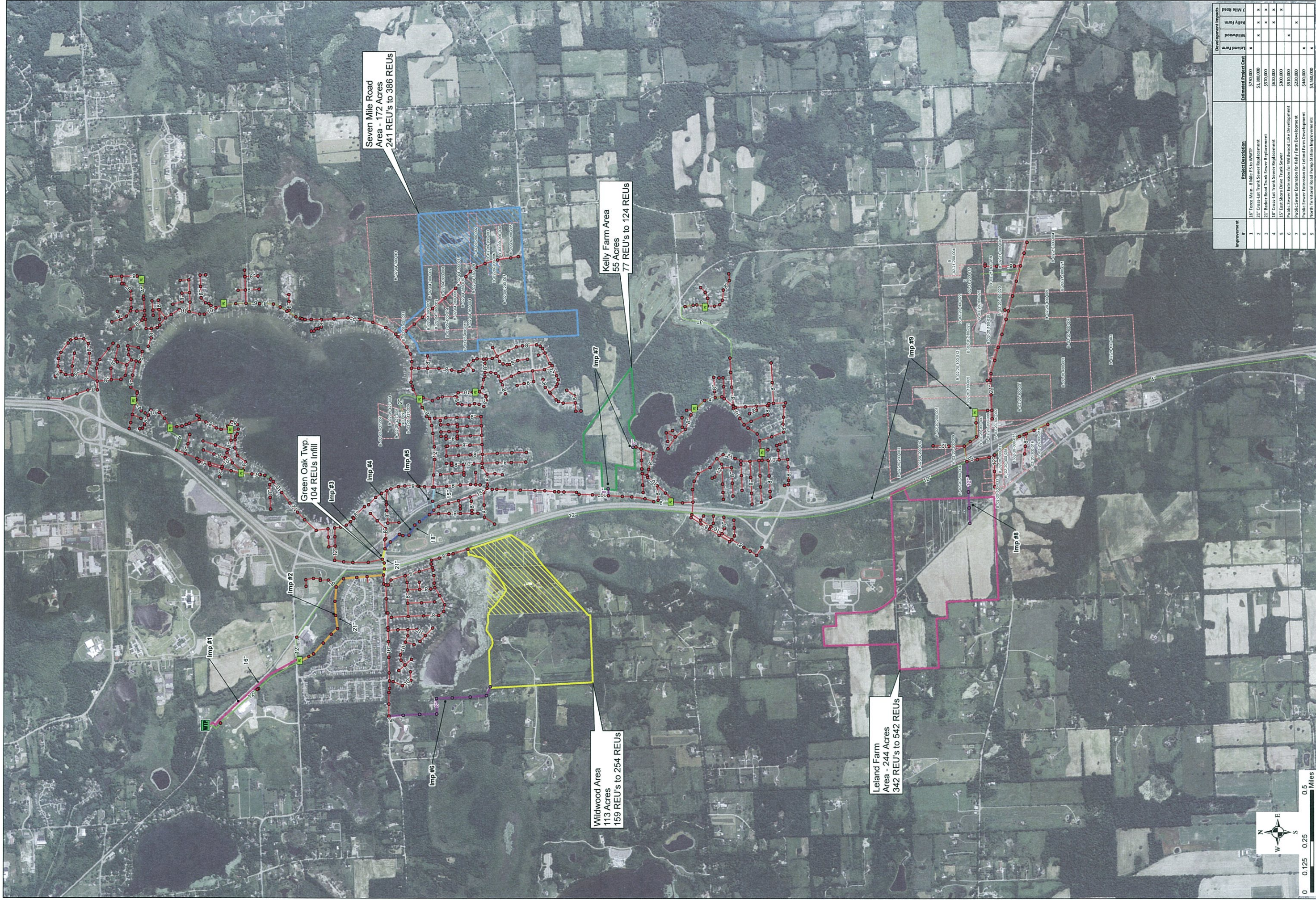


Figure 1 - Potential MDR Developments and Available Sewer Capacity Prior to Potential Development

Note: Available capacity is approximate and flow monitoring should be conducted prior to finalizing decisions.



Seven Mile Road Area - 172 Acres
241 REU's to 386 REUs

Kelly Farm Area
55 Acres
77 REU's to 124 REUs

Green Oak Twp.
Infill
104 REUs

Wildwood Area
113 Acres
159 REU's to 254 REUs

Leland Farm Area - 244 Acres
342 REU's to 542 REUs

Improvement #	Project Description	Estimated Project Cost	Wildwood	Kelly Farm	7 Mile Road
1	16" Force Main - 8 Mile P3 to WWTP	\$750,000	X	X	X
2	21" Cross-Link Trunk Sewer Replacement	\$1,300,000	X	X	X
3	21" Baker Road Trunk Sewer Replacement	\$570,000	X	X	X
4	18" Cross-Link Trunk Sewer Replacement	\$620,000	X	X	X
5	15" East Shore Drive Trunk Sewer	\$300,000	X	X	X
6	Public Sewer Extension for Wildwood Lake Development	\$550,000	X		
7	Public Sewer Extension for Kelly Farm Development	\$250,000	X		
8	Public Sewer Extension for Leland Farm Development	\$440,000	X		
9	North Territorial Road Pump Station Improvements	\$1,540,000	X		

Figure 2 - Potential Sewer Upgrades for Development

Note: Available capacity is approximate and flow monitoring should be conducted prior to finalizing decisions.

- Pump Station
- WWTP
- Sanitary Manhole
- Proposed Manhole
- Special Assessments
- MDR Parcels - Wildwood (Not included in Analysis)
- MDR Parcels - Wildwood (Not included in Analysis)
- Proposed Sewer Extension
- Force Main
- Gravity Sewer